

## ENVI<sup>®</sup> DIGITAL ELEVATION MODEL (DEM) EXTRACTION MODULE

### GET THE 3RD DIMENSION OF INFORMATION FROM ELEVATION DATA

Users of remotely sensed imagery — from developers in defense and commercial industries to scientists and researchers — increasingly need spatially accurate, 3D representations to help them analyze their images and gain a better understanding of topography. Digital Elevation Models (DEM) provide this information and are commonly used in Geographic Information Systems and relief maps.

#### BENEFITS

Determine accurate positions of land areas or objects

Verify data, such as river watersheds and building heights

Establish the location of hazardous terrain areas

Analyze physically inaccessible areas

The ENVI DEM Extraction Module saves you time and improves your image analysis workflow with flexible viewing, measurement and editing tools to enhance your 3D representations. These tools give you all you need to view anaglyph stereo pairs, measure building or mountain heights, edit DEM values and extract 3D features.



ENVI

## EASILY CREATE DEMS FROM GEOSPATIAL IMAGERY

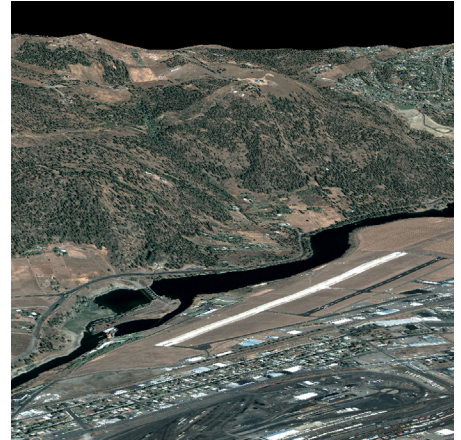
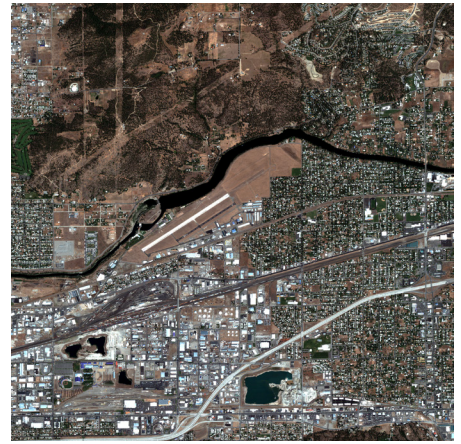
The ENVI DEM Extraction Module allows you to quickly and easily create spatially accurate DEMs of your geospatial imagery. With the module's flexible, step-by-step, fully guided process, you can produce accurate and robust models from virtually any airphoto or satellite stereo pair images with RPCs, including those from these pushbroom sensors: SPOT, IKONOS, QuickBird, WorldView, OrbView-3, GeoEye-1, ALOS/PRISM, CARTOSAT-1, FORMSAT-2, KOMPSAT-2, RapidEye, and ASTER. You can use DEMs independently or use them as a basis for additional analysis, such as orthorectification, topographical analysis, line of sight analysis, and contour map generation.

## FOR MORE INFORMATION:

[HarrisGeospatial.com/ENVI](http://HarrisGeospatial.com/ENVI)

Email: [geospatialinfo@harris.com](mailto:geospatialinfo@harris.com)

Phone: 303.786.9900



*The ENVI DEM Extraction Module allows you to create a digital representation of terrain from satellite imagery.*

### About Harris Corporation

Harris Corporation is a leading technology innovator, solving customers' toughest mission-critical challenges by providing solutions that connect, inform and protect. Harris supports government and commercial customers in more than 100 countries and has approximately \$6 billion in annual revenue. The company is organized into three business segments: Communication Systems, Space and Intelligence Systems and Electronic Systems.

[Learn more at Harris.com.](http://Harris.com)

FLORIDA | NEW YORK | VIRGINIA | BRAZIL | UNITED KINGDOM | UAE | SINGAPORE

### Non-Export Controlled Information

Harris is a registered trademark of Harris Corporation. Trademarks and trade names are the property of their respective companies.

© 2017 Harris Corporation 2/17 VIS-AL

**HARRIS**® TECHNOLOGY TO CONNECT,  
INFORM AND PROTECT™